

1ST-LED RC14

LED RACQUET COURT 1x4



Project	
Type:	Approved By:

Applications

Indoor racquetball, squash and handball courts.

Features & Specifications

- High grade vented aluminum housing
- Impact resistant lens and flush mount trim
- Obscured tempered glass lens eliminates glare
- High color rendering for enhanced visibility
- High quality Osram PrevaLED Linear LED Modules
- Paired with high output OPTOTRONIC power supplies
- Nominal current drive for high efficiency and long life
- Made in the USA - Sustainable, upgradeable fixture

CONTACT US for Additional HIGH LUMEN Packages

Arrays	Wattage	Lumen Package	Delivered Lumens
1	63	6,000	6,419
2	126	13,000	12,837
3	190	19,000	19,256



Frame Out Mounting



Product Image
Coming Soon

Uni-Lug Mounting

Ordering Information

1ST-LED		RC14					
Series	Family	Arrays	Lumen Package	CCT	Voltage	Mounting	Lens
1st Source LED	Racquet Court 1x4	1 = 2 = 3 =	6L = 6000 13L = 13,000 19L = 19,000	30K = 3000K 35K = 3500K 40K = 4000K 50K = 5000K	U = 120-277V 3 = 347V 4 = 480V	FM = Frame Out UNI = Uni-Lug	OTG = Obscured Tempered Glass

Programmable Options

CLM = Constant Lumen Maintenance
D1 = Dim to 1% of full output
SD50 = Step Dim to 50% of full output
SDLV = Step Dim by Line Voltage
(Standard Dimming Default is 10%)

Controls and Accessories

WCM = Wireless Control Module
EMB = Emergency Ballast

Custom Options

Consult Factory for Custom Options



Construction

- .040" white vented aluminum housing
- Knockouts provided for power feed
- Adjustable uni-lug levelers (optional)
- Obscured tempered glass lens

LED Specifications

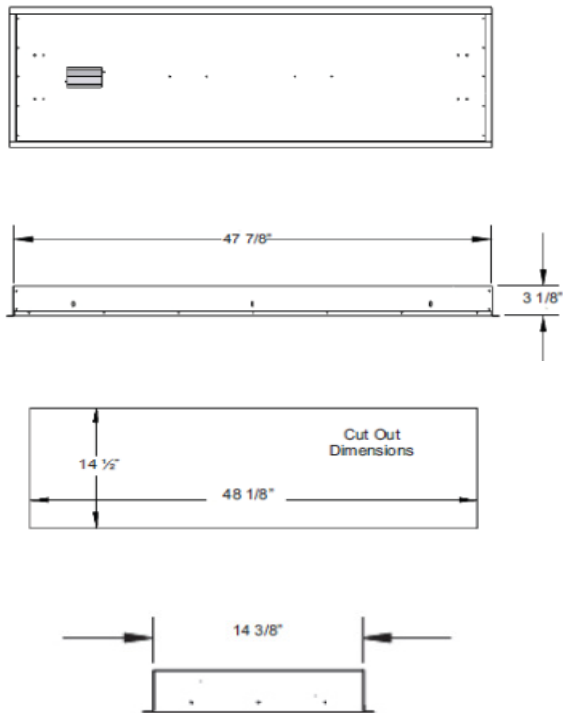
- Osram PrevaLED linear LED modules
- Driven at nominal operating current
- >80 CRI, CCT 3000, 3500, 4000 or 5000K

Electrical Specifications

- Osram Optotronic LED Power Supply
- Universal voltage 120-277v, 50-60Hz
- Power factor > 0.9 & THD < 20%
- ANSI C62.41 Cat.A 2.5KV
- EMI Compliance FCC Part 15 Class A
- Internal power quick disconnect

Dimensions

Frame Out Mounting



Consult Factory for Uni-Lug Dimensions

Programmable Features (@ Factory)

- Output Current
- Dimming 0-10v, 10-100%, 1-100%
- Auxilliary output voltage
- Constant lumen output
- End of life indicator

Controls and accessories

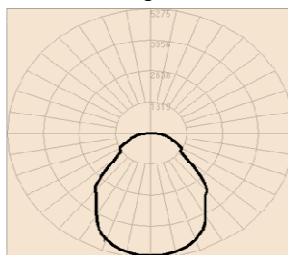
- Osram Encelium Wireless Control Module
- Emergency ballast adder option (specify lumens)

Ratings & Warranty

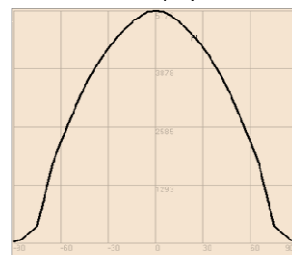
- Operating Temp: -30°C to 50°C (-22°F to 122°F)
- Service life > 60,000 hours
- RoHS compliant
- CSA approval pending
- 5-year limited product warranty

Photometrics

Polar Curve Diagram



Axial Candela Display

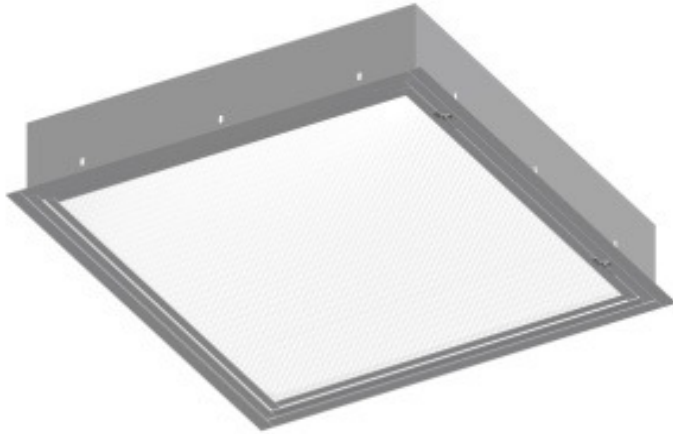


Coefficients of Utilization Zonal Cavity Method				
RC	80			
RW	70	50	30	10
0	119	119	119	119
1	109	105	101	97
2	100	92	86	80
3	92	82	74	68
4	84	73	64	58
5	78	65	57	50
6	72	59	50	44
7	67	54	45	39
8	62	49	41	35
9	58	45	37	32
10	55	42	34	29

Zonal Lumen Summary	
Zone	Lumens
0-10	489.99
10-20	1397.79
20-30	2082.9
30-40	2401.65
40-50	2359.63
50-60	1883.6
60-70	1367.52
70-80	661.26
80-90	174.49
90-100	16.76
100-110	1.68
110-120	0

1ST-LED RC22

LED RACQUET COURT 2x2



Project	
Type:	Approved By:

Applications

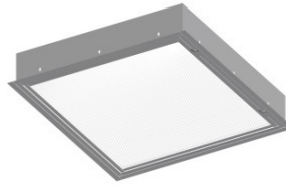
Indoor racquetball, squash and handball courts.

Features & Specifications

- Vented high grade aluminum housing
- Impact resistant lens with flush mount trim
- Obscured tempered glass lens eliminates glare
- High color rendering for enhanced visibility
- Osram PrevaLED Linear LED Modules
- Paired with OPTOTRONIC LED power supplies
- Nominal current drive for high efficiency and long life
- Made in the USA - Sustainable, upgradeable fixture

CONTACT US for Additional HIGH LUMEN Packages

Arrays	Wattage	Lumen Package	Delivered Lumens
2	63	6,000	6,419
4	126	13,000	12,837
6	190	19,000	19,256



Frame Out Mounting



Uni-Lug Mounting

Ordering Information

1ST-LED	RC22						
Series	Family	Arrays	Lumen Package	CCT	Voltage	Mounting	Lens
1st Source LED	Racquet Court 2x2	2 = 4 = 6 =	6L = 6000 13L = 13,000 19L = 19,000	30K = 3000K 35K = 3500K 40K = 4000K 50K = 5000K	U = 120-277V 3 = 347V 4 = 480V	FM = Frame Out UNI = Uni-Lug	OTG = Obscured Tempered Glass

Programmable Options

CLM = Constant Lumen Maintenance
 D1 = Dim to 1% of full output
 SD50 = Step Dim to 50% of full output
 SDLV = Step Dim by Line Voltage
 (Standard Dimming Default is 10%)

Controls and Accessories

WCM = Wireless Control Module
 EMB = Emergency Ballast

Custom Options

Consult Factory for Custom Options



Construction

- .040" white vented aluminum housing
- Knockouts provided for power feed
- Adjustable uni-lug levelers (optional)
- Obscured tempered glass lens

LED Specifications

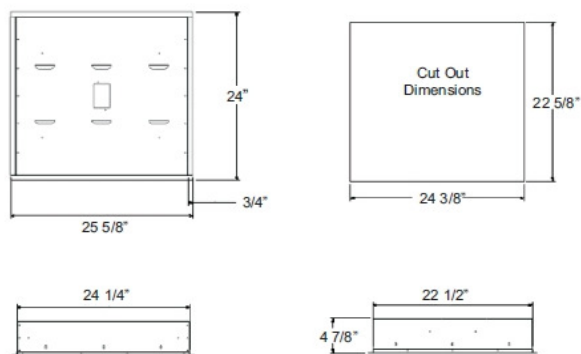
- Osram PrevaLED linear LED modules
- Driven at nominal operating current
- >80 CRI, CCT 3000, 3500, 4000 or 5000K

Electrical Specifications

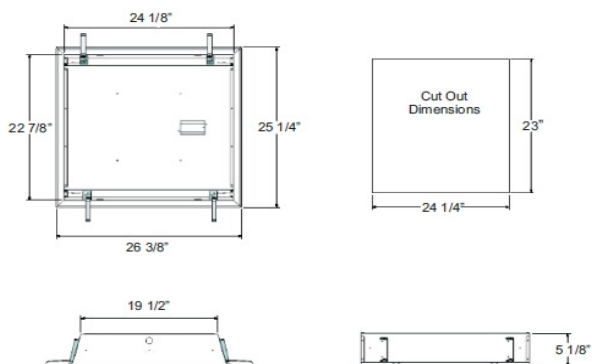
- Osram Optotronic LED Power Supply
- Universal voltage 120-277v, 50-60Hz
- Power factor > 0.9 & THD < 20%
- ANSI C62.41 Cat.A 2.5KV
- EMI Compliance FCC Part 15 Class A
- Internal power quick disconnect

Dimensions

Frame Out Mounting



Mounting with Uni-Lug



Programmable Features (@ Factory)

- Output Current
- Dimming 0-10v, 10-100%, 1-100%
- Auxilliary output voltage
- Constant lumen output
- End of life indicator

Controls and accessories

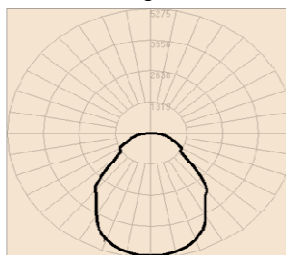
- Osram Encelium Wireless Control Module
- Emergency ballast adder option (specify lumens)

Ratings & Warranty

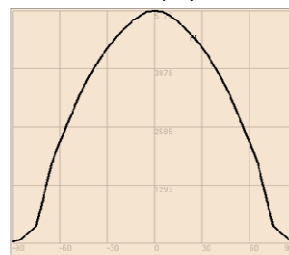
- Operating Temp: -30°C to 50°C (-22°F to 122°F)
- Service life > 60,000 hours
- RoHS compliant
- CSA approval pending
- 5-year limited product warranty

Photometrics

Polar Curve Diagram

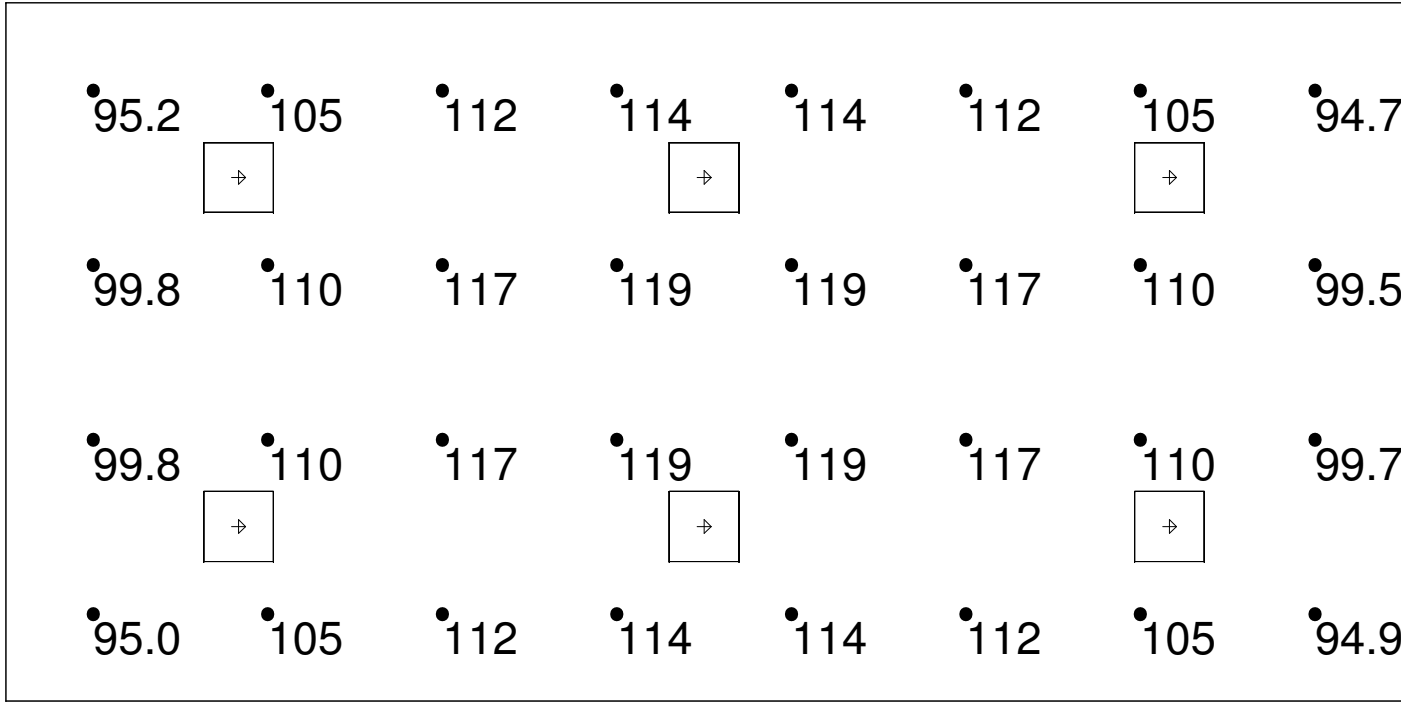


Axial Candela Display



Coefficients of Utilization				
Zonal Cavity Method				
RC	80			
RW	70	50	30	10
0	119	119	119	119
1	109	105	101	97
2	100	92	86	80
3	92	82	74	68
4	84	73	64	58
5	78	65	57	50
6	72	59	50	44
7	67	54	45	39
8	62	49	41	35
9	58	45	37	32
10	55	42	34	29

Zonal Lumen Summary	
Zone	Lumens
0-10	489.99
10-20	1397.79
20-30	2082.9
30-40	2401.65
40-50	2359.63
50-60	1883.6
60-70	1367.52
70-80	661.26
80-90	174.49
90-100	16.76
100-110	1.68
110-120	0



Calculation Summary							
Description	Label	Units	Avg	Max	Min	Avg/Min	Max/Min
	Layout1_Floo	Fc	108.83	119	94.7	1.15	1.26

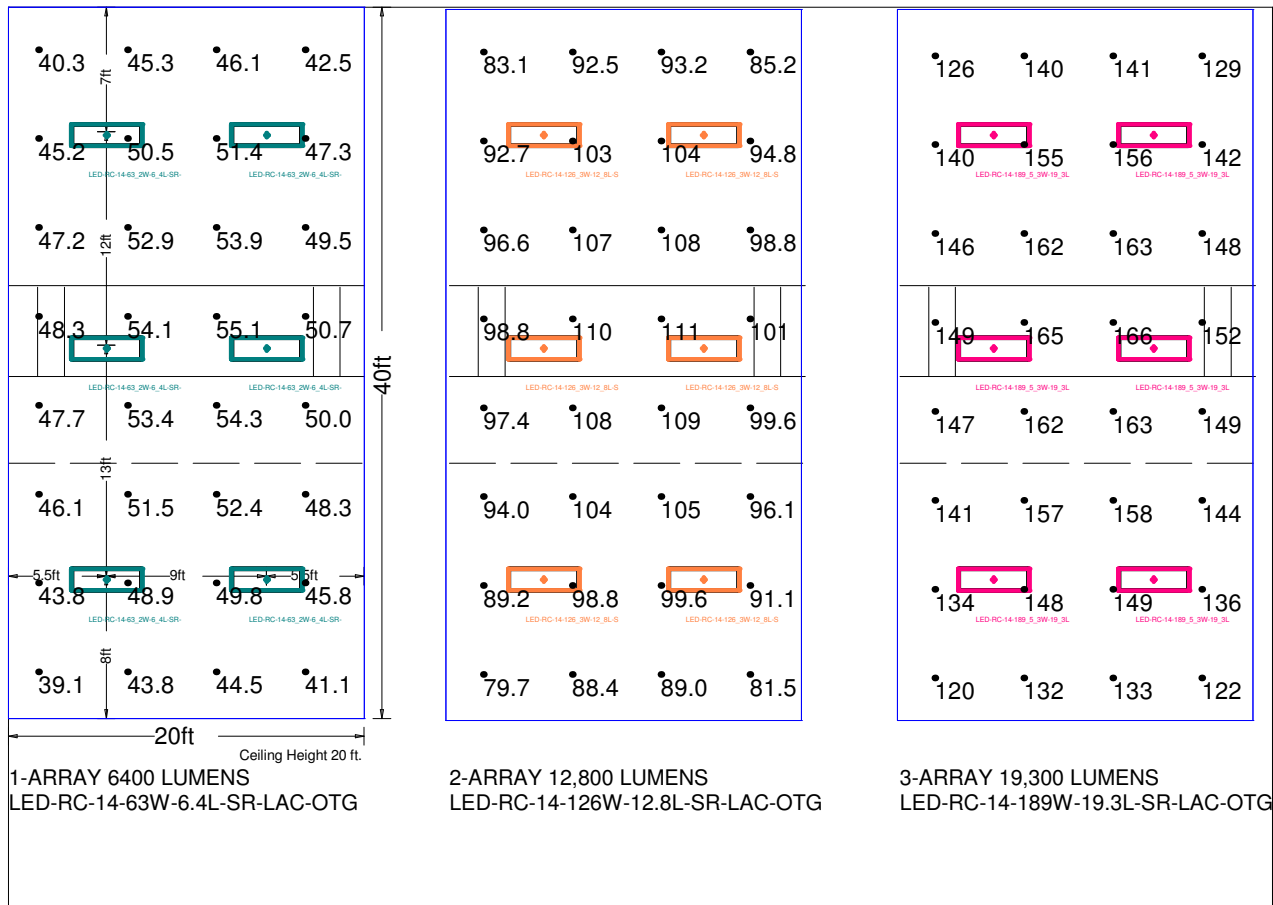
Luminaire Schedule						
Symbol	Qty	Label	Total Lamp Lumens	LLF	Lum. Watts	Total Watts
☐	6	LED-RC-22-6A-OTC-1N.A.		1.000	142	852

Photometrics are shown in footcandles. Footcandle readings are estimates based on estimated reflective values. Actual fc reading could have a +/- variation.

Drawn By: James Gara
Date: 9/1/2015
Scale:
Revisions

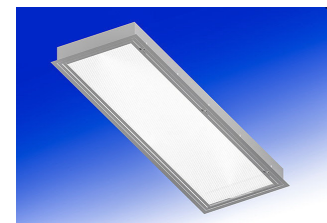
Requested By: John Gearhart

Project: Racquetball Court
Customer:



Luminaire Schedule

Symbol	Qty	Label	Arrangement	LLF	Description
	6	LED-RC-14-63_2W-6_4L-SR-	SINGLE	1.000	1ST-LED-RC-14-63.2W-6.4L-SR-LAC-
	6	LED-RC-14-126_3W-12_8L-S	SINGLE	1.000	1ST-LED-RC-14-126.3W-12.8L-SR-LA
	6	LED-RC-14-189_5_3W-19_3L	SINGLE	1.000	1ST-LED-RC-14-189.5.3W-19.3L-SR-



Calculation Summary

Description	Label	Units	Avg	Max	Min	Avg/Min	Max/Min
1-ARRAY 2.5' AFF	CalcPts_3	Fc	48.15	55.1	39.1	1.23	1.41
2-ARRAY 2.5' AFF	CalcPts_4	Fc	97.19	111	79.7	1.22	1.39
3-ARRAY 2.5' AFF	CalcPts_5	Fc	146.05	166	120	1.22	1.39