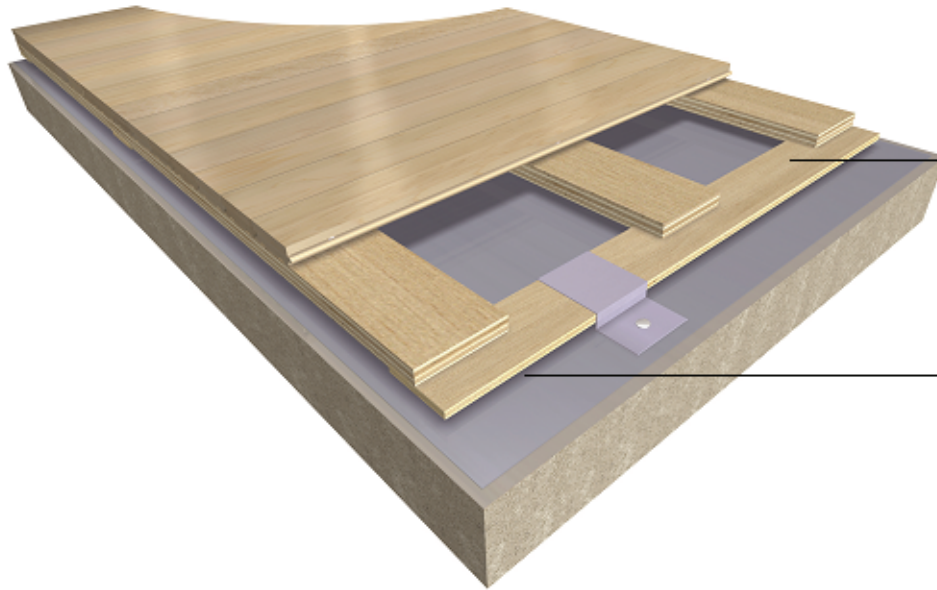


Floor System Data Sheet



Distinctive Flooring & Athletic Surfaces

Aero NR Floor System System Type: Fixed Resilient



Pre-Assembled Aero NR panels

5/8" (16 mm) ProAction pads

MFMA NORTHERN HARD MAPLE

Random Length (RL)
Action Long Length (FJ)

TESTING AGENCY:

Certified by ISSS

PERFORMANCE MEETS OR EXCEEDS:

EN 14904 Type 4
DIN 18032 Part 2
ASTM - F2772
MFMA PUR
FIBA Level 1

SLAB DEPRESSION:

25/32" x 2 1/4" (20mm x 57mm) System requires 2" slab depression

LEED:

FSC Maple & Subfloor available, MR credits - based on products, selected materials and facility locations

PERFORMANCE & SYSTEM STABILITY:

Factory Fabricated
Excellent ball bounce
SCORES compliant
Fixed Resilient Floor System
Excellent Shock Absorption



Innovative design that achieves outstanding playing performance characteristics in a fixed resilient system.

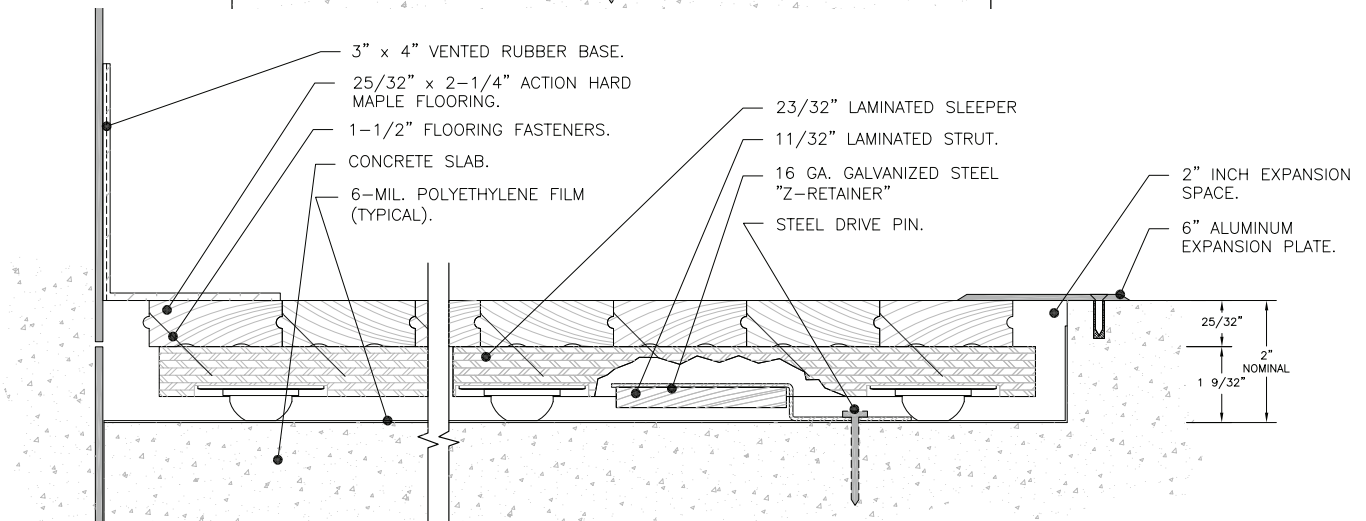
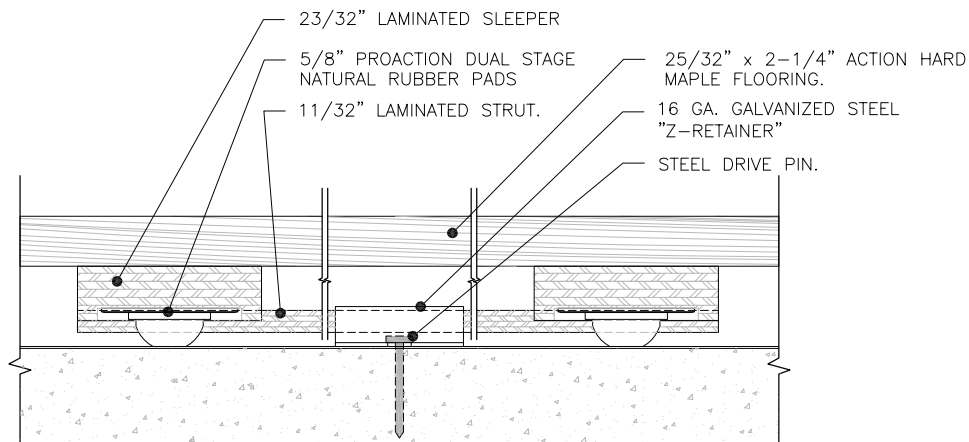
Factory fabricated subfloor provides a level of consistency and uniformity on the system maximizing performance and satisfaction.

The manufacturer and flooring shall be independently verified by the guidelines of the ISO 14064-2006 & ISO 14044:2006 Life Cycle Assessment (LSA) confirming a negative carbon footprint.

Carbon Evaluation must be inclusive and based on all corporate facilities, offices and mills.

The manufacturer and flooring shall be independently verified by the guidelines of the 14064-1:2006 World Resource Institutes Greenhouse Gas Protocol, Scopes 1, 2 & 3.

The manufacturer and flooring shall be registered in the Collaborative for High Performance Schools (CHPS) Product Database



For a complete specification in CSI format contact Allied Products at (800) 864-1272.


Allied Products, LLC
Distinctive Flooring & Athletic Surfaces

P.O. Box 1431
Sherwood, OR 97140
Toll Free: (800) 864-1272
Fax: (971) 832-8640
www.alliedproductsllc.com